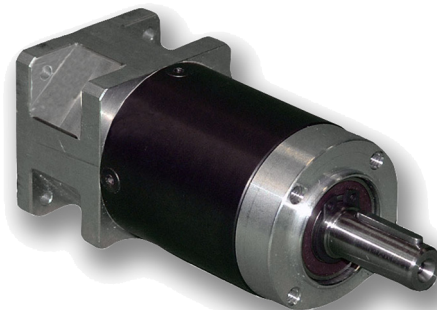


GBPN-040 Series - Planetary Gearboxes



FEATURES

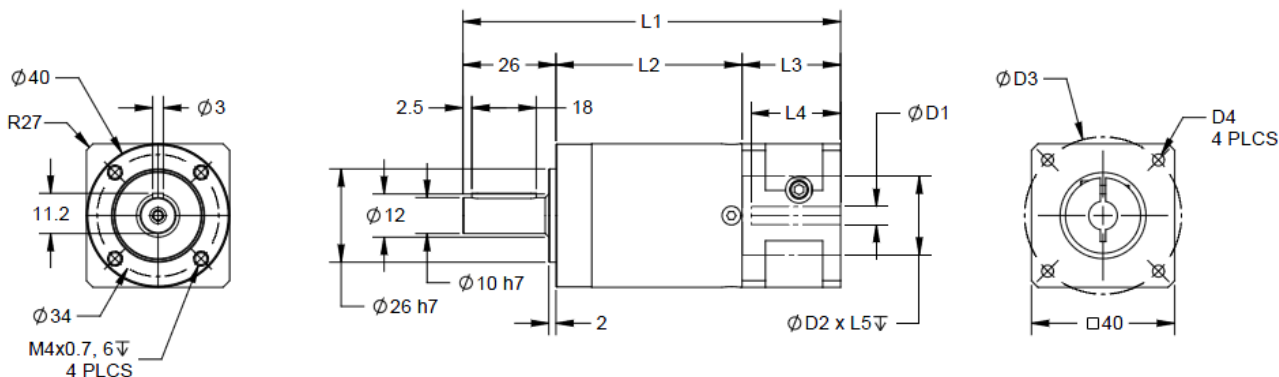
- **Compatible with NEMA Size 17 Motors**
- **Backlash as Low as 15 arc-min**
- **Gear Ratios from 3:1 512:1**
- **Long Design Life, Over 30,000 Hours**
- **Up to 98 Percent Efficiency**
- **Peak Input Speeds of Up to 18000 rpm**
- **Lifetime Lubrication, High Durability**



DESCRIPTION

Planetary Gearboxes for NEMA 17 Stepper motors, dc motors, or servo motors. The GBPN-040 Series Planetary Gears were designed to be high quality and reliable in-line planetary gears. They are available many sizes with gear ratios ranging from 3:1 to 512:1. These planetary gearboxes come in a one-piece housing that produce consistent low backlash with permissible peak input speeds up to 18,000 RPM.

DIMENSIONS



| ITEM | DESCRIPTION | MOTOR INTERFACE | |
|------|---------------------------|-----------------|-----------|
| | | AA171-197 | SMH40-315 |
| D1 | Input Shaft Diameter | 5 | 8 |
| L4 | Max Shaft Length | 25 | 25 |
| D2 | Pilot Diameter | 22 | 30 |
| L5 | Pilot Depth | 3.5 | 3 |
| D3 | Mounting Bolt Hole Circle | 43.8 | 45 |
| D4 | Bolt Hole Size | 3.3 | M3x7 |
| L1 | Overall Length (1-Stage) | 92.5 | 93.5 |
| L1 | Overall Length (2-Stage) | 105.5 | 106.5 |
| L1 | Overall Length (3-Stage) | 117.5 | 118.5 |

***1-Stage Models:** Gear Ratios 3-8

***2-Stage Models:** Gear Ratios 9-40,64

***3-Stage Models:** Gear Ratios 60,80-512

| Model # | Gear Ratio | Compatible NEMA Frame Size | Rated Output Torque (in-lbs) | Peak Input Speed (RPM) | Backlash (arcmin) | Running Noise (dB) | L2 Length (mm) | Weight (lbs) |
|------------------------|------------|----------------------------|------------------------------|------------------------|-------------------|--------------------|----------------|--------------|
| GBPN-0401-003-xxxx-yyy | 3 | 17 | 97 | 18000 | <15 | 58 | 39 | 0.8 |
| GBPN-0401-004-xxxx-yyy | 4 | 17 | 133 | 18000 | <15 | 58 | 39 | 0.8 |
| GBPN-0401-005-xxxx-yyy | 5 | 17 | 124 | 18000 | <15 | 58 | 39 | 0.8 |
| GBPN-0401-008-xxxx-yyy | 8 | 17 | 53 | 18000 | <15 | 58 | 39 | 0.8 |
| GBPN-0402-009-xxxx-yyy | 9 | 17 | 148 | 18000 | <19 | 58 | 52 | 1.0 |
| GBPN-0402-012-xxxx-yyy | 12 | 17 | 177 | 18000 | <19 | 58 | 52 | 1.0 |
| GBPN-0402-015-xxxx-yyy | 15 | 17 | 159 | 18000 | <19 | 58 | 52 | 1.0 |
| GBPN-0402-016-xxxx-yyy | 16 | 17 | 177 | 18000 | <19 | 58 | 52 | 1.0 |
| GBPN-0402-020-xxxx-yyy | 20 | 17 | 177 | 18000 | <19 | 58 | 52 | 1.0 |
| GBPN-0402-025-xxxx-yyy | 25 | 17 | 159 | 18000 | <19 | 58 | 52 | 1.0 |
| GBPN-0402-032-xxxx-yyy | 32 | 17 | 177 | 18000 | <19 | 58 | 52 | 1.0 |
| GBPN-0402-040-xxxx-yyy | 40 | 17 | 159 | 18000 | <19 | 58 | 52 | 1.0 |
| GBPN-0402-064-xxxx-yyy | 64 | 17 | 66 | 18000 | <19 | 58 | 52 | 1.0 |
| GBPN-0403-060-xxxx-yyy | 60 | 17 | 177 | 18000 | <22 | 58 | 64 | 1.2 |
| GBPN-0403-080-xxxx-yyy | 80 | 17 | 177 | 18000 | <22 | 58 | 64 | 1.2 |
| GBPN-0403-100-xxxx-yyy | 100 | 17 | 177 | 18000 | <22 | 58 | 64 | 1.2 |
| GBPN-0403-110-xxxx-yyy | 120 | 17 | 159 | 18000 | <22 | 58 | 64 | 1.2 |
| GBPN-0403-160-xxxx-yyy | 160 | 17 | 177 | 18000 | <22 | 58 | 64 | 1.2 |
| GBPN-0403-200-xxxx-yyy | 200 | 17 | 159 | 18000 | <22 | 58 | 64 | 1.2 |
| GBPN-0403-256-xxxx-yyy | 256 | 17 | 177 | 18000 | <22 | 58 | 64 | 1.2 |
| GBPN-0403-320-xxxx-yyy | 320 | 17 | 159 | 18000 | <22 | 58 | 64 | 1.2 |
| GBPN-0403-512-xxxx-yyy | 512 | 17 | 66 | 18000 | <22 | 58 | 64 | 1.2 |

Part numbers are based on the specifications of the motor being matched to the gearbox.

-xxxx denotes motor pilot, -yyy denotes input shaft diameter.

For more information contact an Anaheim Automation Applications Engineer for assistance.